




DOCUMENT COMPILED BY **[WWW.VOLVORACING.DE](http://WWW.VOLVORACING.DE)**



## TABLE OF CONTENTS


Section	Contents
A	Engine
B	Fuel and exhaust systems
C	Electrical equipment and instruments
D	Power train
E	Suspension and brakes
F	Body and safety
G	Miscellaneous equipment

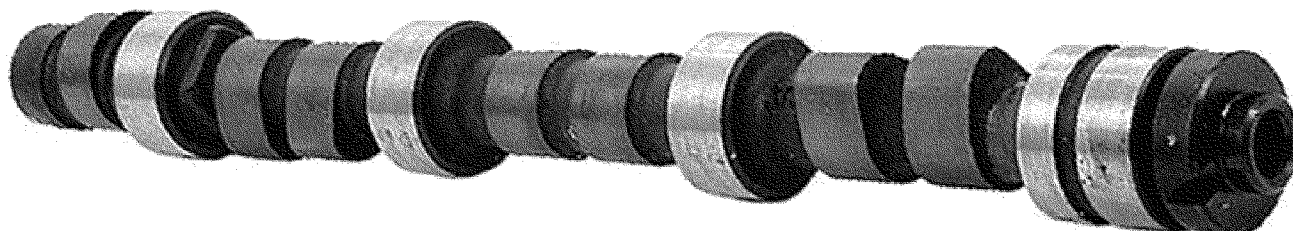
	GT - KIT B20	EXPORT		810701
		FLAP	SECTION	PAGE
		240	A	1

GT-kit B20 for model year 1975 (552550) is discontinued.

Spare parts are available until further notice.

For information on parts included in the kit, please see 140, section A, pages 12-14.

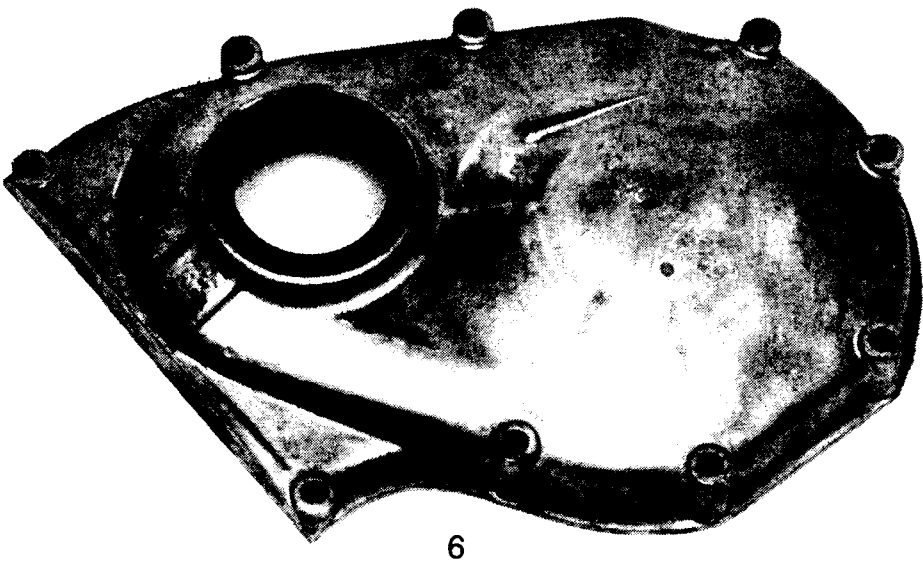
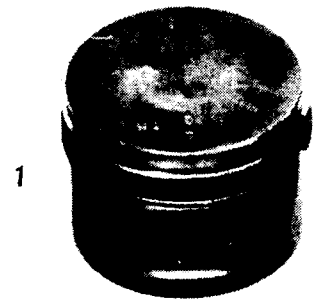
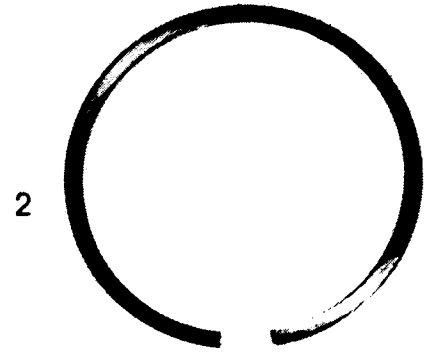
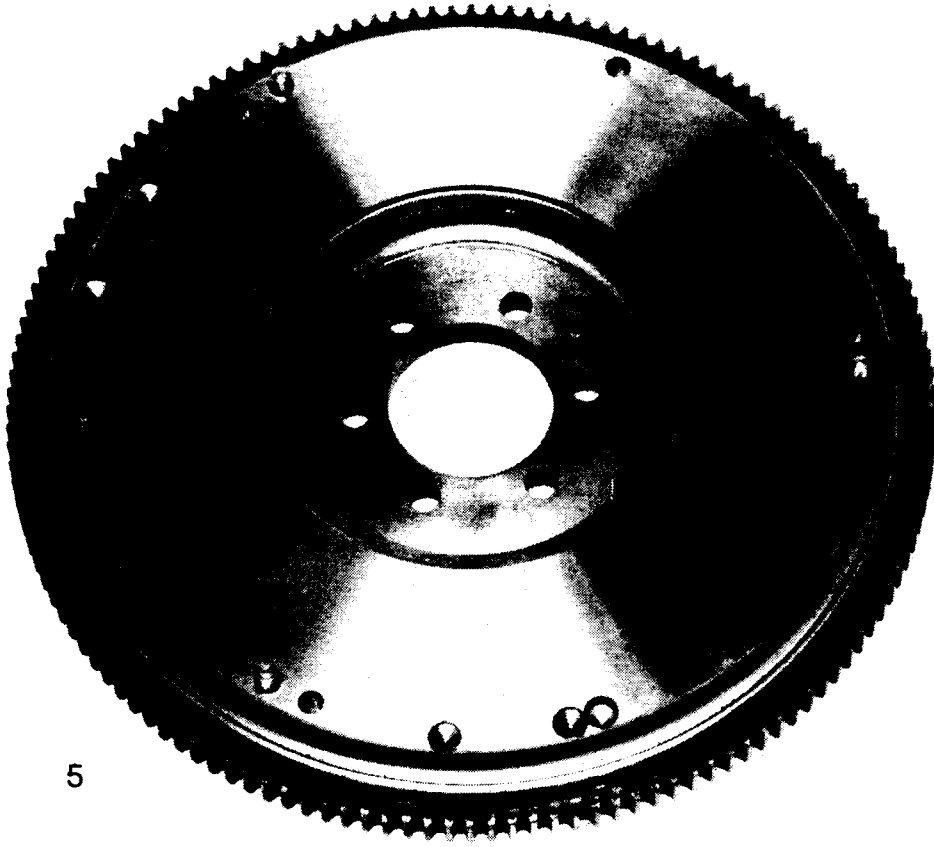
	CAMSHAFT B20	EXPORT	810701	
		FLAP 240	SECTION A	PAGE 2



Pos	Qty	Part No	Description	Specification
1	1	552422-8	Camshaft "K"	Standard camshaft in GT-kit B20. Suitable for single or twin carburetor engines with moderately increased output. Gives better low-end torque than production camshaft for injection engines.

VALVE TIMING

Type	Valve lift	Inlet opens before TDC	Inlet closes after BDC	Exhaust opens before BDC	Exhaust closes after TDC	Tappet play Inl/Exh	Duration
K	10.8 mm	27°	70°	70°	27°	0.40/0.45 mm	277°

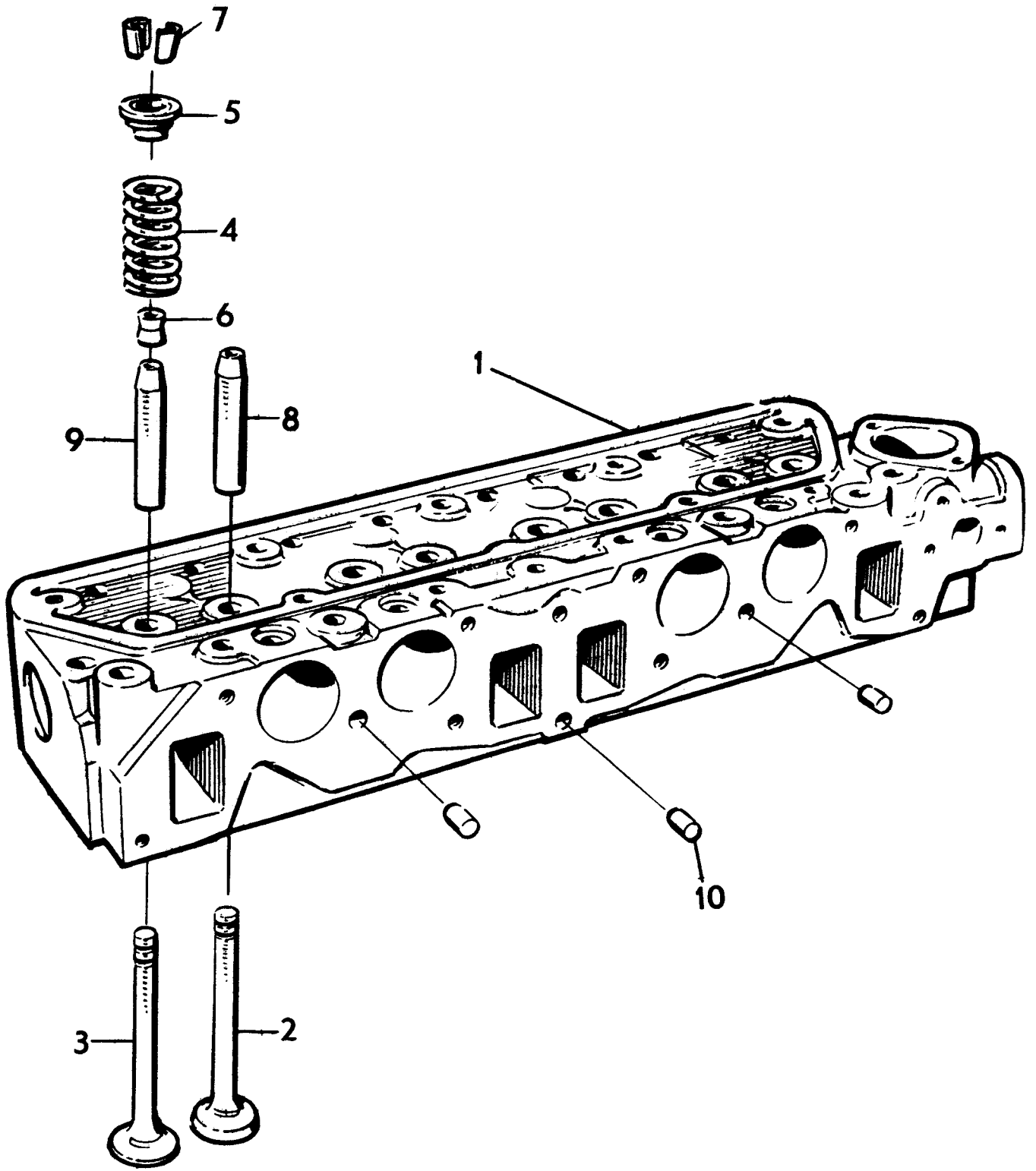





PISTON, PISTON RING KIT, PISTON PINS,  
FLYWHEEL and OIL COOLERS

EXPORT		810701	
FLAP	SECTION	PAGE	
240	A	3	

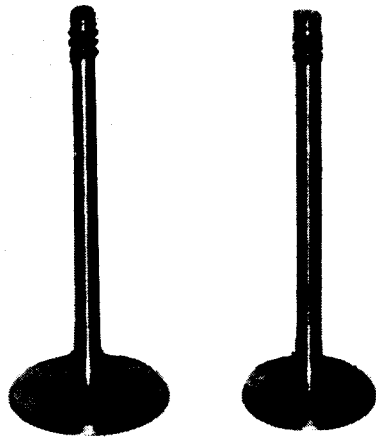
Pos	Qty	Part No	Description	Specification
1	4	552450-9	Piston compl, forged, 93 mm, 2.2 litres	Piston pin diam, 24 mm. Designed for B20 engines 1974-1976. Can also be used in re-bored B21 engines.
2	4	552435-0	x Piston ring kit for piston 552450	
3	4	552433-5	x Piston pin 24 mm for piston 552450	
4	4	552434-3	x Locking ring for piston pin 552433	
5	1	552833-6	Lightened flywheel 8 bolts, weight 7.3 kilos	For B20 1974-1976.
6	1	418693-8	Timing gear cover	Including neoprene seal (B20)
	1	552847-6	Baffled oil sump	B20
	1	552909-4	13 vane oil cooler, complete with thermostat	Thermostat controlled to ensure correct oil temperature in all driving conditions. Suitable for B20, B19 - B23.
		552907-8	x Adapter with thermostat	
		552918-5	x O-ring	
	1	552919-3	19 vane oil cooler, complete with thermostat	Thermostat controlled to ensure correct oil temperature in all driving conditions. Suitable for B20, B19 - B23.
		552907-8	x Adapter with thermostat	
		552918-5	x O-ring	



	CYLINDER HEAD PARTS B20	EXPORT	810701	
		FLAP	SECTION	PAGE
		240	A	4

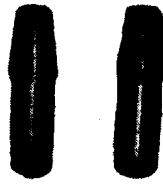
Pos	Qty	Part No	Description	Specification
1	1		Cylinder head	
2	4	552816-1	x Valve, inlet	Modified, diam. 44 mm
3	4	552817-9	x Valve, exhaust	Modified, diam. 35 mm
4	8	418737-3	x Valve spring	Production, yellow marking
5	8	460181-1	x Valve spring washer	Production
6	8	419702-6	x Valve seal	Production
7	16	419643-2	x Valve lock	Production
8	4	552828-6	x Valve guide, inlet	Shortened, tapered
9	4	552818-7	x Valve guide, exhaust	Shortened
10	3	950586-8	x Guide pin	





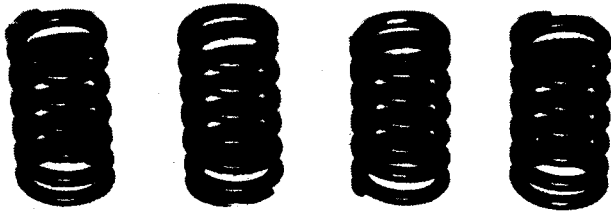
1

2

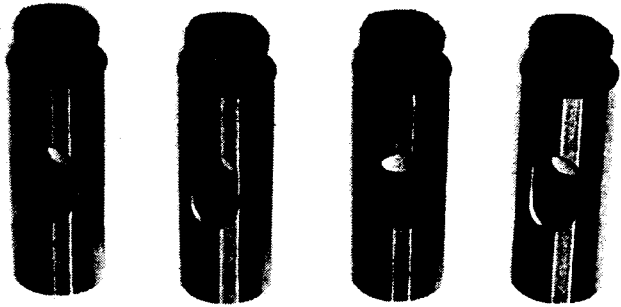


3

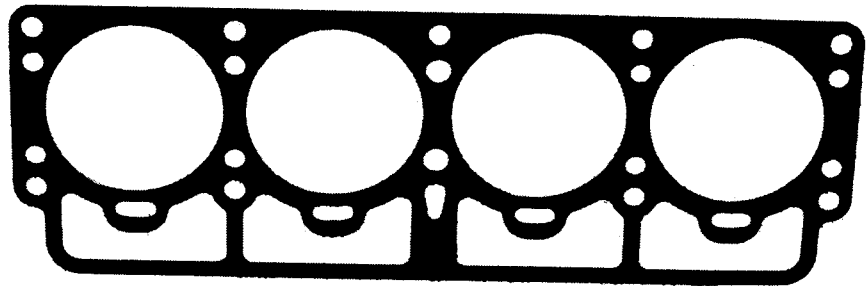
4



5



6




7

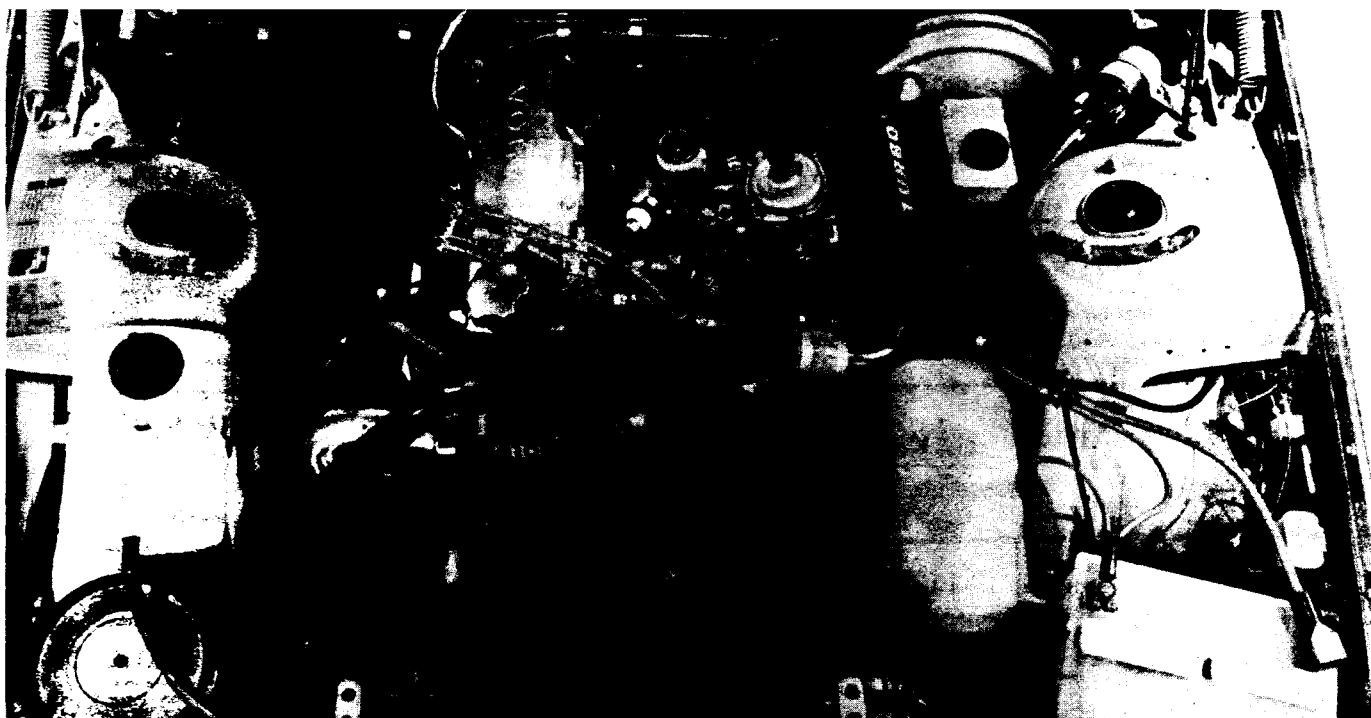


TAPPETS and CYLINDER HEAD GASKETS

EXPORT		810701	
FLAP	SECTION	PAGE	
240	A	5	

Pos	Qty	Part No	Description	Specification
1	4	552816-1	Valve, inlet	44 mm, modified
2	4	552817-9	Valve, exhaust	35 mm, modified
3	4	552828-6	Valve guide, inlet	Shortened, tapered
4	4	552818-7	Valve guide, exhaust	Shortened
5	8	418737-3	Valve spring	Production spring. Yellow marking.
	8	460181-1	Valve spring washer	Production washer for valve spring 418737
	8	419702-6	Valve seal	Standard on all cylinder heads
	16	419643-2	Valve lock	Standard on all cylinder heads
	8	552466-5	Valve tappet	Wizemann manufactured - Standard in GT-kit and Tuning kit "Special I" B20
	3	950586-8	Guide pin	
	1	552832-8	Shim kit for valve spring B20	Is used to adjust production valve spring (418737)
7	1	824855-1	Cylinder head gasket	Thickness 1.2 mm
	1	552836-9	Cylinder head gasket	Turbo gasket for pistons up to a diameter of 93.0 mm

	<b>B19A/B21A TURBO KIT</b>	EXPORT	810701	
		FLAP	SECTION	PAGE
		240	A	6



The turbo kit is certified with B19A and B21A engines according to ECE R15 01, 02, 03 and complies with European noise regulations.


It fits all 240-series cars with B19A or B21A engines with compression ratio 8.5:1 with the following exemptions:

- Cars with automatic gearbox
- Right hand steering cars
- 245 with elevated roof
- Cars with air conditioner
- Cars with parking heater - other than 03-B.

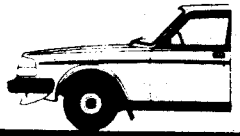

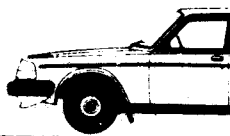

Depending upon each car's specification the basic turbo kit must be completed according to table below:

Specification	Crankcase vent. kit	Ign. coil	Tyres	Stabilizers	Washer	Choke-wire	Jet needle
Year model 1975-1978	8360031-2	1219230-8	HR-specificat. *	See table of Recommenat.			
Year model 1979-1980	"	-	"	"			
Year model 1981 -	8360032-0						
B19A engine							8360043-9
Cars with SU-carb.						1272658-4	
Cars with power steering and/or park.heater 03-B					1304149-6 1213943-2 1255568-6 1304205-6 1304204-9		

\* Since top speed exceeds 180 km/h

	B19A/B21A TURBO KIT	EXPORT		810701
		FLAP	SECTION	PAGE
		240	A	7

Due to increased engine output we strongly recommend that the roadholding characteristics of the vehicle should be improved according to table:

<b>SUITABLE SHOCK ABSORBER AND ANTI-SWAY BAR COMBINATIONS</b> In order to match the increased engine output the road holding characteristics of the vehicle should be improved by changing shock absorbers and anti-sway bars as per table below.		<b>This is especially important for model years 1975—1978.</b> Alt. 1: Volvo 240 1975—1978 - Optimal Alt. 2: Volvo 1975—1978 - Minimum Alt. 3: Volvo 1979—			
					
Shock absorber	1	1128793	1272192 <sup>1)</sup>	1128793	1206641 <sup>1)</sup>
	2	1128793	1272192 <sup>1)</sup>	1128793	1206641 <sup>1)</sup>
	3	1128793	1272192 <sup>1)</sup>	1128793	1206641 <sup>1)</sup> (std)
Anti-sway bar	1	1228840	1229956	1228840	1229313
	2	—	1229313 <sup>2)</sup>	—	—
	3	1228840	—	1228840	—

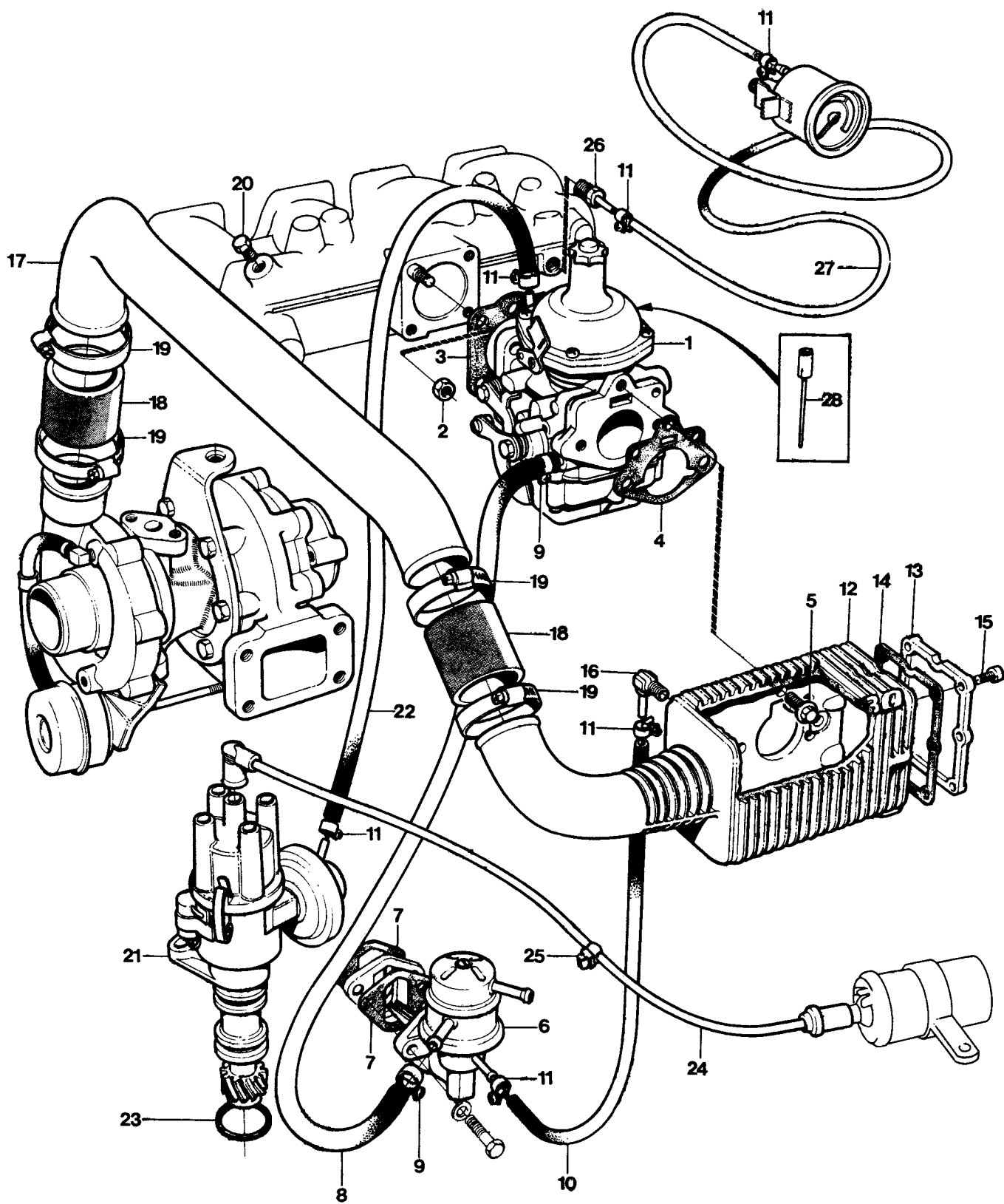
NOTE! The entire combination must be fitted. Otherwise road holding deteriorates.


<sup>1)</sup> Levelling system should not be used.

<sup>2)</sup> Rear anti-sway bar must be replaced on model years 1975—1978 to provide installation space for the new exhaust system.

B21A            Max. output DIN 103 kW/92 rps    (140 hp/5500 rpm)  
                   Max. torque DIN 216 Nm/58 rps    (22.0 kpm/3500 rpm)

B19A            Max. output DIN 99 kW/92 rps    (135 hp/5500 rpm)  
                   Max. torque DIN 202 Nm/67 rps    (20.6 kpm/4000 rpm)

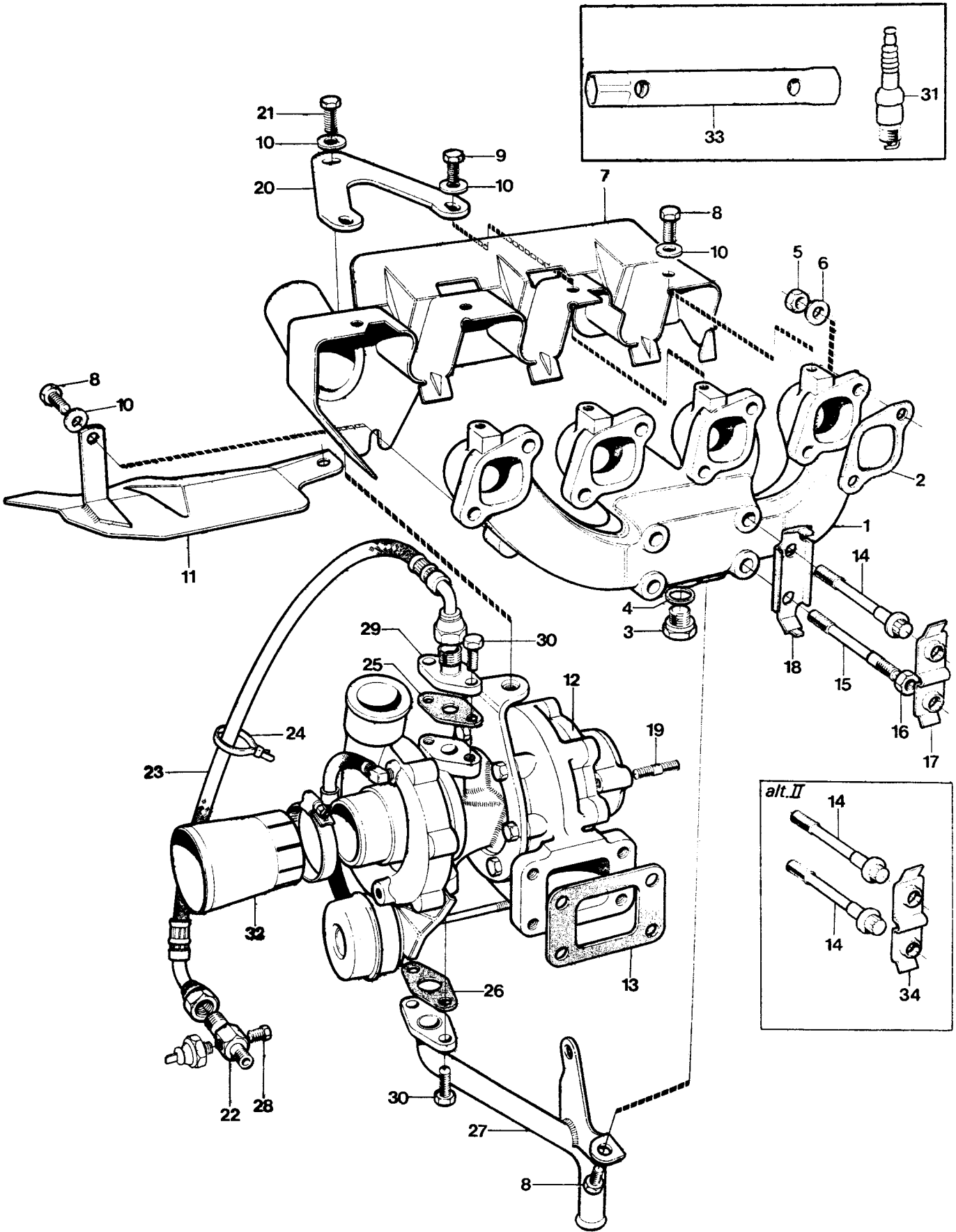


	B19A/B21A TURBO KIT	EXPORT	810701	
		FLAP	SECTION	PAGE
		240	A	8

Pos	Qty	Part No	Description	Specification
-----	-----	---------	-------------	---------------

		8360000-7	B19/21 A Turbo, basic kit	
1	1	8360011-4	x Carburetor, compl	
2	4	955782-8	x Nut	
3	1	1269041-8	x Gasket	
4	1	680642-6	x Gasket	
5	3	966378-2	x Screw	
6	1	8360001-5	x Fuel pump	
7	2	463392-1	x Gasket	
8	1	1266500-6	x Fuel hose	
9	2	945651-8	x Hose clip	
10	1	948958-4	x Pressure hose	
11	6	947331-5	x Hose clip	
12	1	8360020-5	x Air inlet box	
13	1	8360021-3	x Cover	
14	1	8360025-4	x Gasket	
15	6	942001-9	x Screw	
16	1	949012-9	x Nipple	
17	1	8360010-6	x Air inlet pipe	
18	2	466327-4	x Connecting hose	
19	4	943478-8	x Hose clip	
20	1	191026-4	x Plug	
21	1	8360018-9	x Distributor	
22	1	948958-4	x Vacuum hose	
23	1	949659-7	x O-ring	
24	1	8360009-8	x Ignition cable	
25	1	947687-0	x Retainer	
26	1	948040-1	x Nipple	
27	1	192055-2	x Pressure hose	
28	1	8360043-9	Jet needle	

For B19 engines. Replaces needle in carburetor 8360011-4.  
Not included in the basic kit.



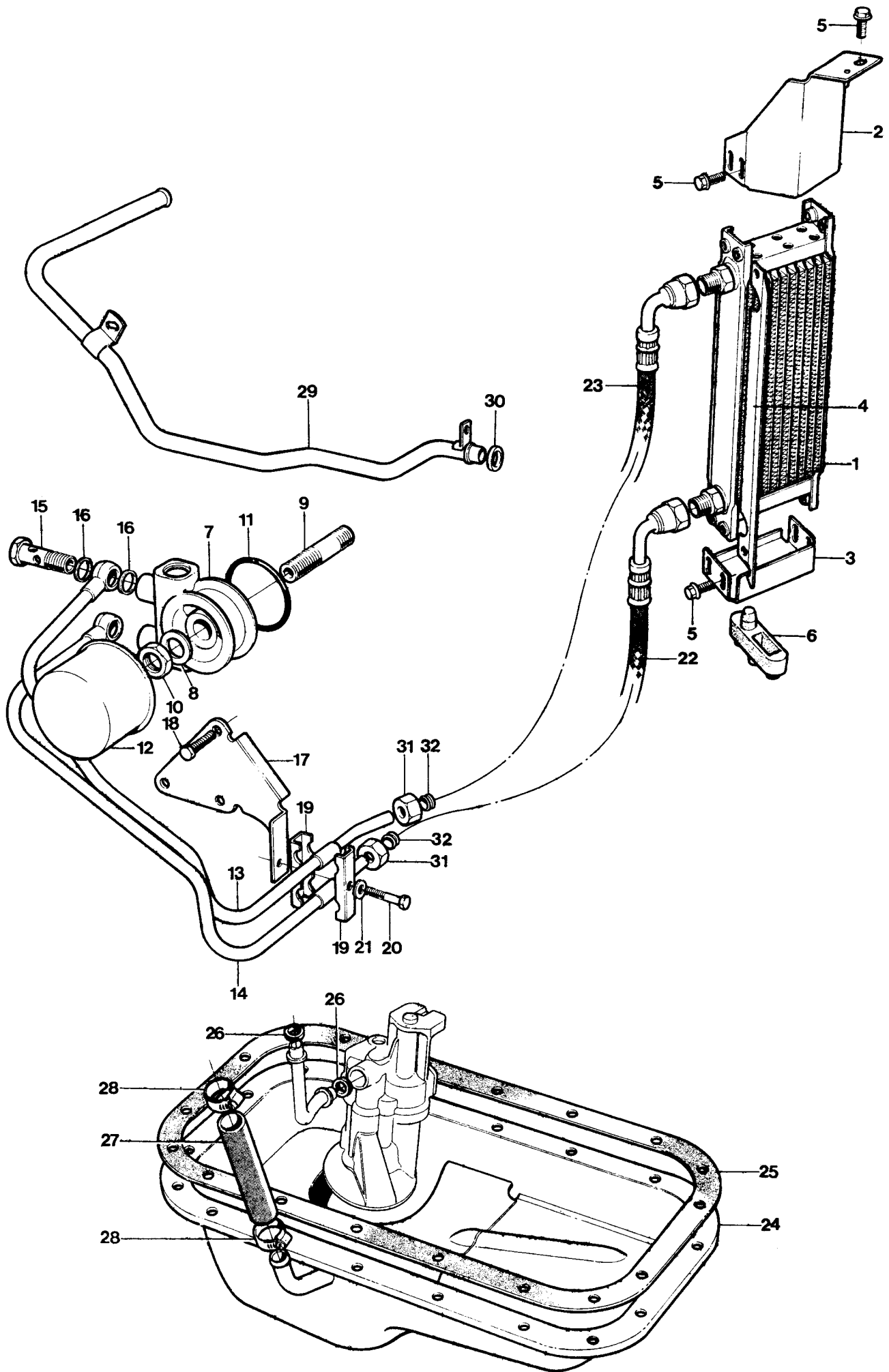


B19A/B21A TURBO KIT

EXPORT		810701	
FLAP	SECTION	PAGE	
240	A	9	

Pos	Qty	Part No	Description	Specification
1	1	1276998-0	x Exhaust manifold	
2	4	463845-6	x Gasket	
3	1	960632-8	x Plug	
4	1	947624-3	x Gasket	
5	8	945036-1	x Nut	
6	7	419401-5	x Washer	
7	1	1276832-1	x Air preheating plate	
8	4	963564-0	x Screw	
9	2	955294-4	x Screw	
10	5	960141-0	x Washer	
11	1	1306482-9	x Heat shield	
12	1	8360022-1	x Turbo unit	
13	1	1276689-5	x Gasket	
14	2	1317067-5	x Screw	
15	2	1326588-9	x Stud	
16	2	1326589-7	x Nut	
17	2	1326221-7	x Securing plate, upper	
18	2	1326222-5	x Securing plate, lower	
19	3	1306910-9	x Stud	
20	1	1306191-6	x Bracket	
21	1	946173-2	x Screw	
22	1	8360005-6	x Adapter	
23	1	8360008-0	x Oil hose	
24	1	948702-6	x Strip clamp	
25	1	420475-6	x Gasket, inlet	
26	1	420423-6	x Gasket, outlet	
27	1	8360030-4	x Draining pipe	
28	1	191026-4	x Plug	
29	1	8360006-4	x Flange	
30	4	955295-1	x Screw	
31	1	273591-8	x Spark plug kit (W5DC)	
31	1	273596-7	Spark plug kit (W6DC)	Alternative. Mainly for city driving.
32	1	8360028-8	x Connecting pipe	
33	1	210107-9	x Spark plug key	
<u>Alternative II</u>				
14	4	1317067-5	Screw	Available from autumn 1981
34	2	1326586-3	Securing plate, upper	



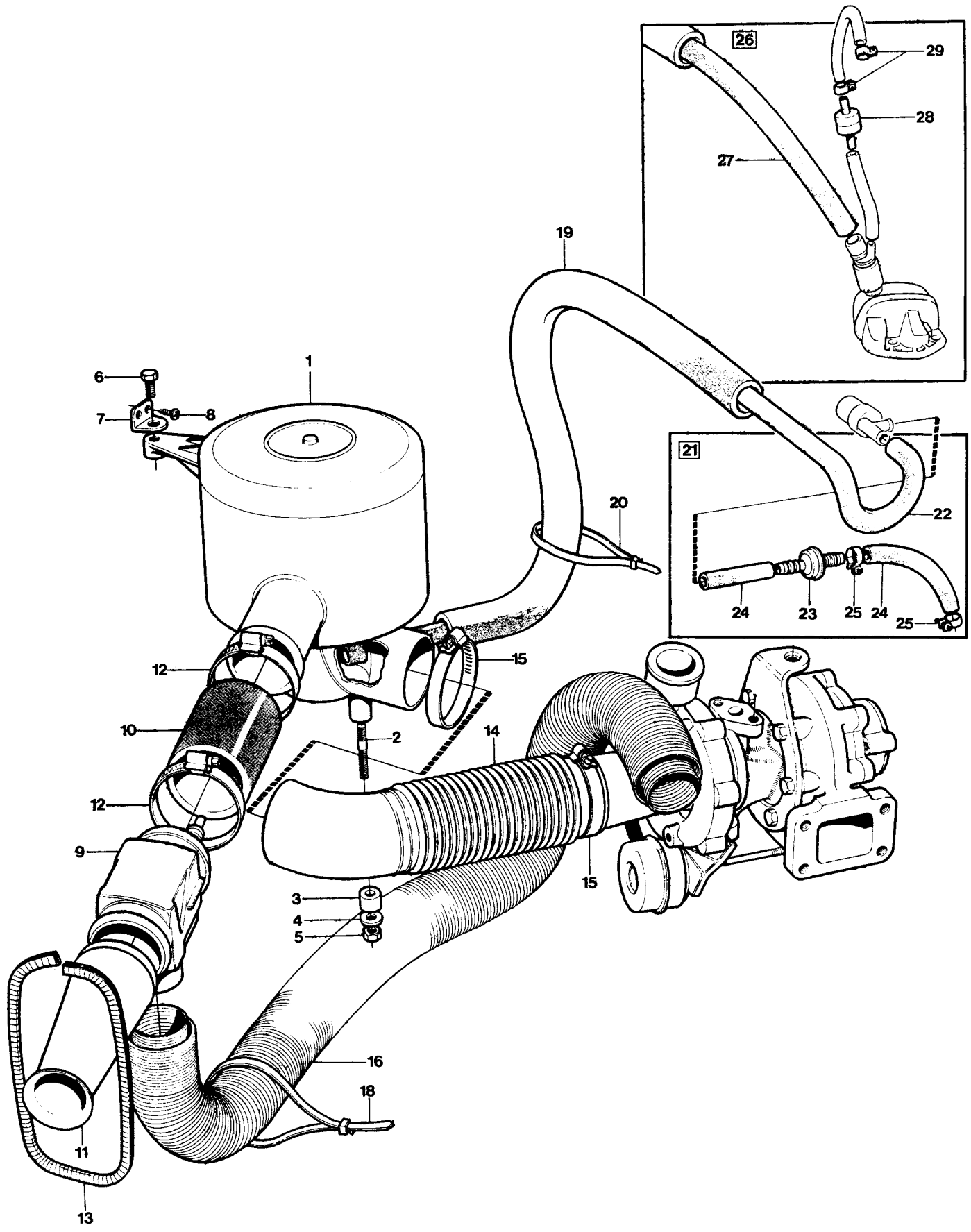





B19A/B21A TURBO KIT

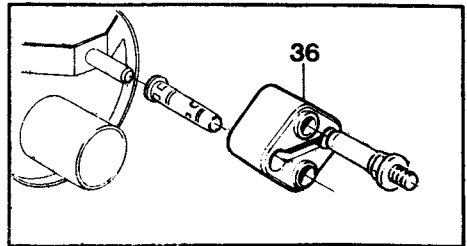
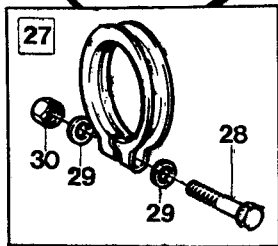
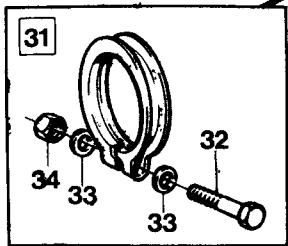
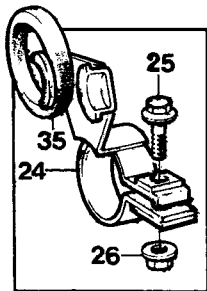
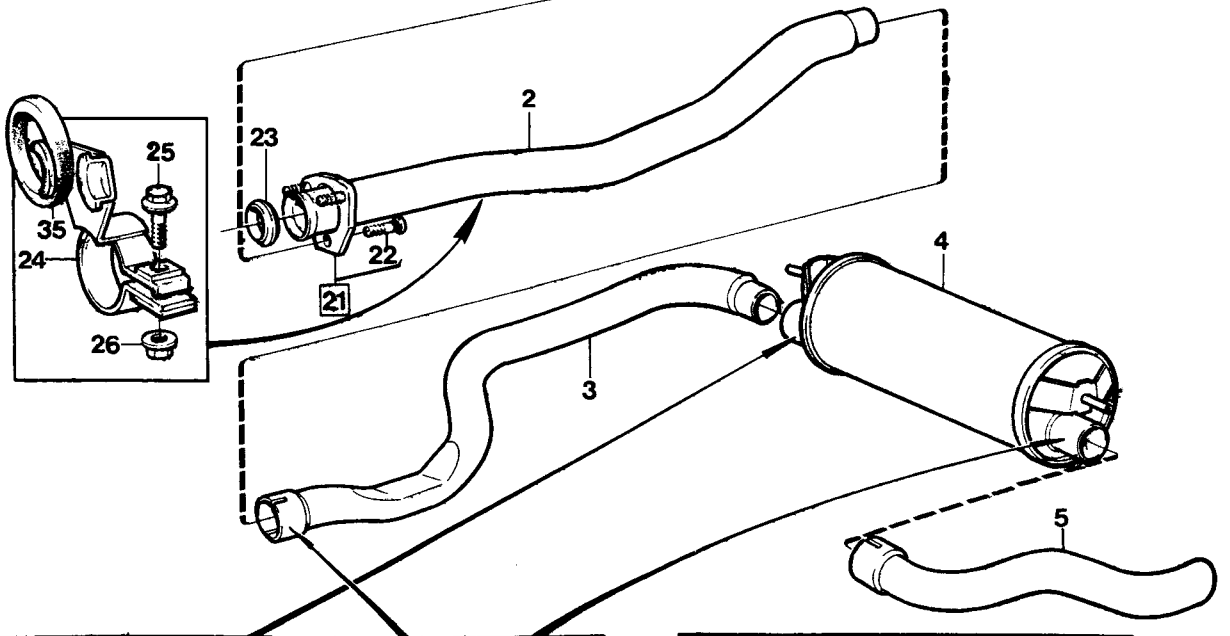
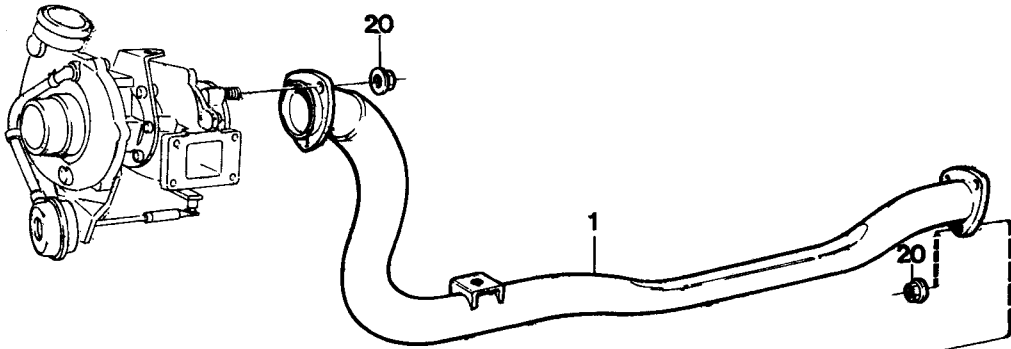
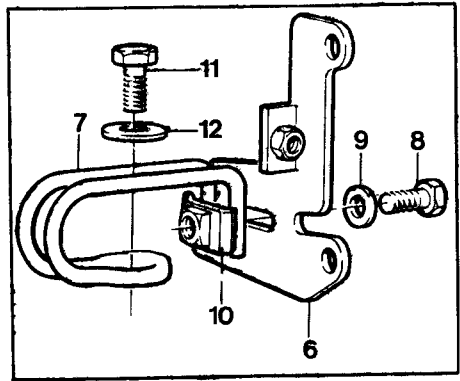
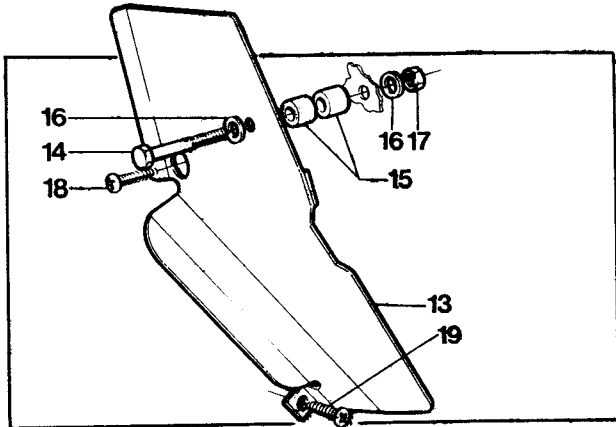
EXPORT		810701	
FLAP	SECTION	PAGE	
240	A	10	

Pos	Qty	Part No	Description	Specification
1	1	1276676-2	x Oil cooler	
2	1	1317695-3	x Bracket	
3	1	1276841-2	x Bracket	
4	1	1306647-7	x Cover plate	
5	9	965175-3	x Screw	
6	1	1276842-0	x Rubber cushion	
7	1	1276680-4	x Thermostat housing	
8	1	824589-6	x Washer	
9	1	1306707-9	x Nipple	
10	1	191701-2	x Nut	
11	1	925093-7	x O-ring	
12	1	1266286-2	x Oil filter	
13	1	1306580-0	x Oil pipe, upper	
14	1	1306579-2	x Oil pipe, lower	
15	2	941686-8	x Banjo screw	
16	4	957179-5	x Gasket	
17	1	1306152-8	x Bracket	
18	3	940142-3	x Screw	
19	2	1306156-9	x Clamp	
20	1	940101-9	x Screw	
21	1	960139-4	x Washer	
22	1	1306157-7	x Oil hose	
23	1	1306158-5	x Oil hose	
24	1	8360003-1	x Oil pan sump, compl	
25	1	463587-6	x Gasket	
26	2	418360-4	x Rubber ring	
27	1	8360026-2	x Hose	
28	2	943473-9	x Hose clip	
29	1	1306162-7	x Return pipe	
30	1	418411-5	x Sealing ring	
31	2	956984-9	x Nut	
32	2	956970-8	x Ferrule	



	B19A/B21A TURBO KIT	EXPORT		810701
		FLAP	SECTION	PAGE
		240	A	11

Pos	Qty	Part No	Description	Specification
1	1	460944-2	x Air filter	
2	1	953241-7	x Stud	
3	1	8360016-3	x Spacer	
4	1	960141-0	x Washer	
5	1	955826-3	x Nut	
6	1	940113-4	x Screw	
7	1	8360027-0	x Bracket	
8	2	955137-5	x Screw	
9	1	1306088-4	x Shutter housing	
10	1	684576-2	x Hose	
11	1	1266458-7	x Air intake	
12	2	943480-4	x Hose clip	
13	1	679754-2	x Protector moulding	
14	1	8360039-5	x Air hose	
15	2	943480-4	x Hose clip	
16	1	8360017-1	x Hot air hose	
18	1	948616-8	x Strip clamp	
19	1	1276438-7	x Insulating hose	
20	1	948616-8	x Strip clamp	
21	1	8360031-2	Crankcase ventilation kit, year models 1975-1980	Not included in the basic kit
22	1	8360042-9	x Hose	
23	1	1228272-9	x Check valve	
24	2	944075-1	x Hose (2x0.1 m)	
25	2	947065-9	x Clip	
26	1	8360032-0	Crankcase ventilation kit, year model 1981-	Not included in the basic kit
27	1	949701-7	x Hose	
28	1	1276472-6	x Check valve	
29	2	947331-5	x Clip	





B19A/B21A TURBO KIT

EXPORT

810701

FLAP

SECTION

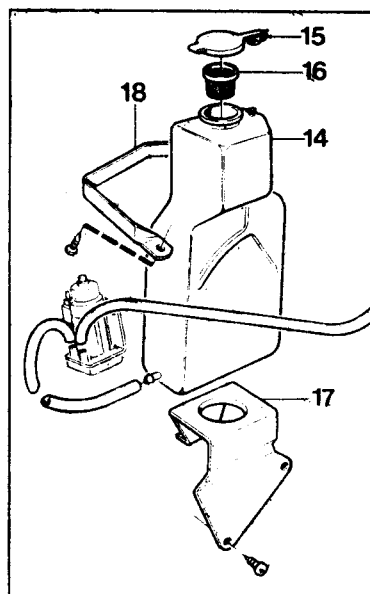
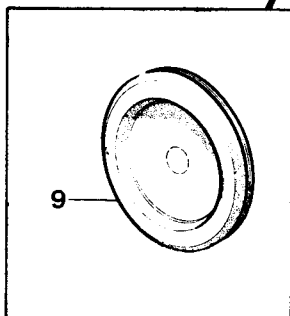
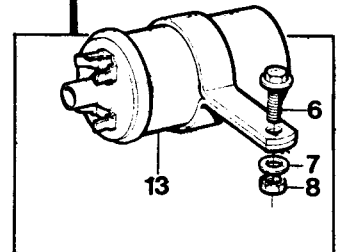
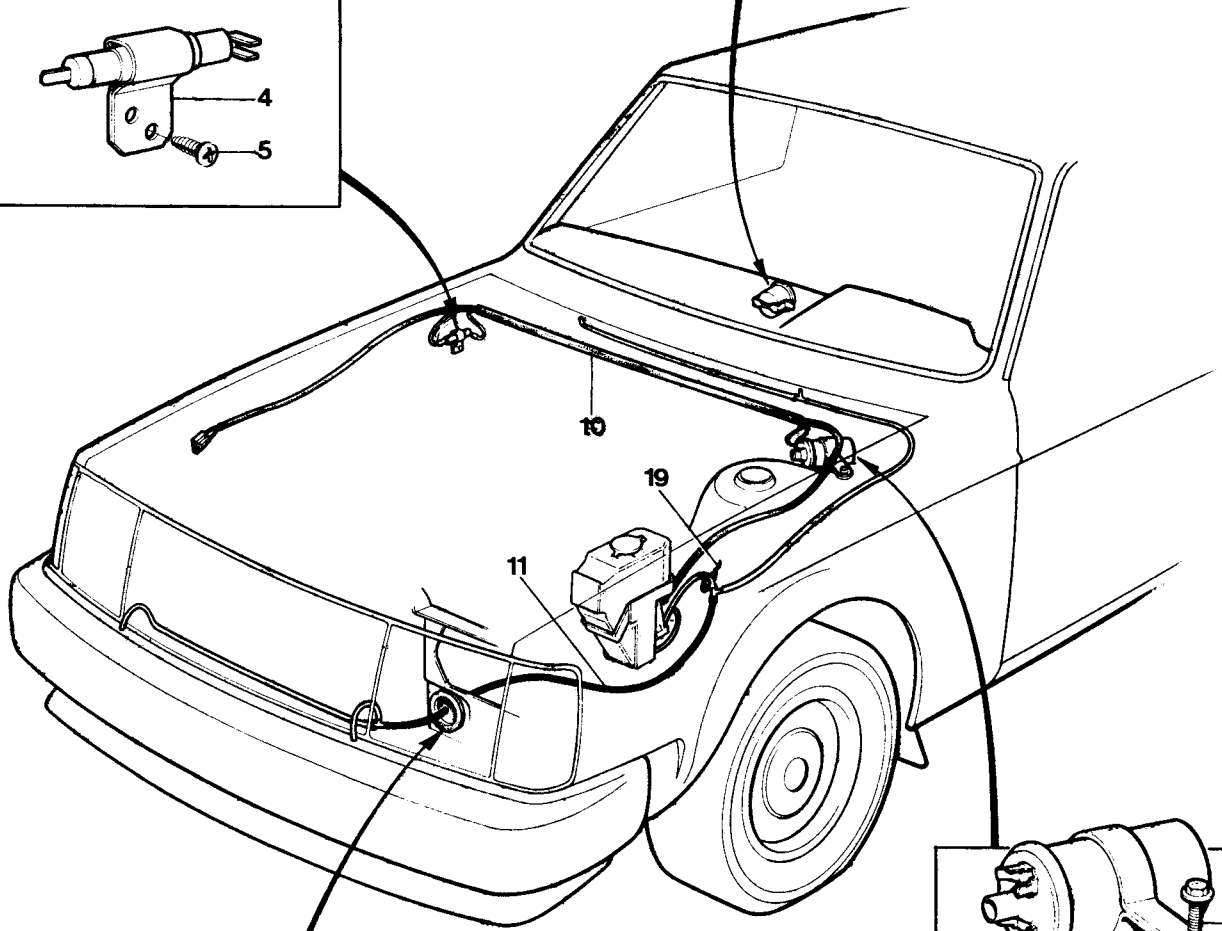
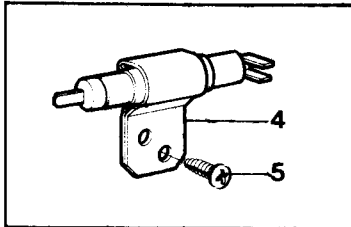
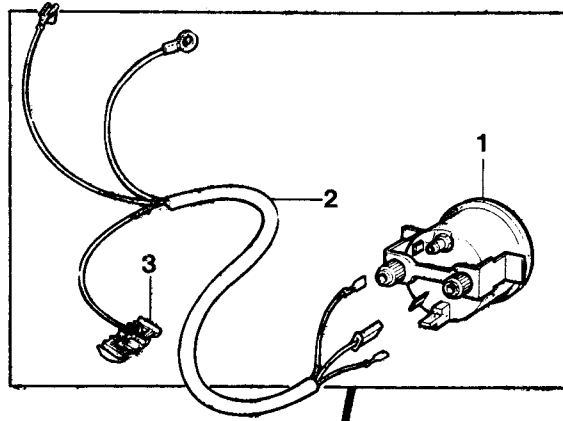
PAGE

240

A

12

Pos	Qty	Part No	Description	Specification
1	1	1306184-1	x Exhaust pipe	
2	1	1306187-4	x Exhaust pipe	
3	1	1306190-8	x Exhaust pipe	
4	1	1306192-4	x Silencer	
5	1	1306193-2	x Exhaust pipe	
6	1	1266519-6	x Bracket	
7	1	1306228-6	x Bracket	
8	1	940142-3	x Screw	
9	1	191172-6	x Washer	
10	1	1276582-2	x Nut plate	
11	1	955317-3	x Screw	
12	1	947541-9	x Washer	
13	1	1304869-9	x Heat shield	
14	1	955303-3	x Screw	
15	2	8360016-3	x Spacer	
16	2	960141-0	x Washer	
17	1	955782-8	x Nut	
18	1	965406-2	x Screw	
19	1	946451-2	x Screw	
20	6	948645-7	x Flange lock nut	
21	1	1306867-1	x Flange, compl	
22	3	1276215-9	xx Press screw	
23	1	1306852-3	x Sealing ring	
24	1	1306609-7	x Mounting bracket	
25	1	946472-8	x Flange screw	
26	1	945409-1	x Flange nut	
27	2	949677-9	x Clip	
28	1	955306-6	xx Screw	
29	2	120265-4	xx Washer	
30	1	955782-8	xx Nut	
31	1	949676-1	x Clip	
32	1	955304-1	xx Screw	
33	2	120265-4	xx Washer	
34	1	955782-8	xx Nut	
35	2	666407-2	x Rubber ring	
36	2	1206468-9	x Shackle	



**TURBO**

12




**B19A/B21A TURBO KIT**

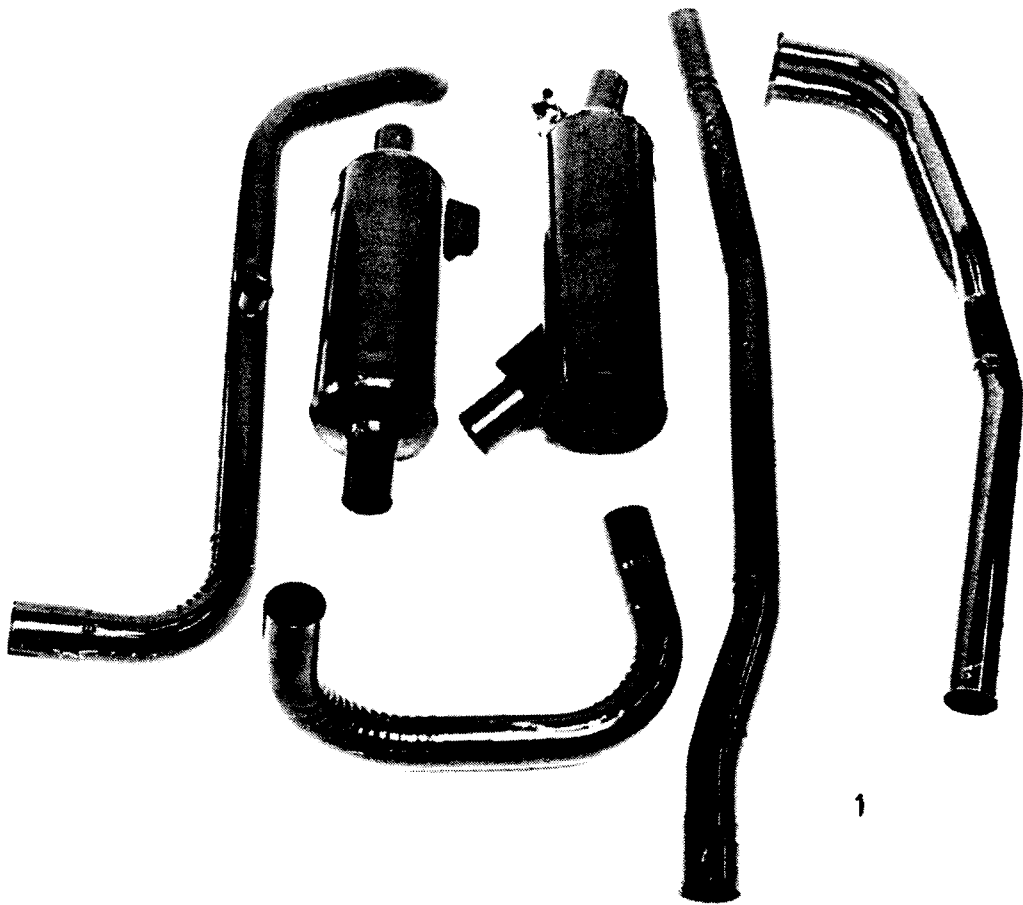
EXPORT		810701	
FLAP	SECTION	PAGE	
240	A	13	


Pos	Qty	Part No	Description	Specification
1	1	8360029-6	x Pressure gauge	
2	1	8360035-3	x El. cable	
3	1	1586597-5	x Joint sleeve	
4	1	1266014-8	x Resistance	
5	2	198071-1 ?	x Screw	
6	1	946440-5	x Screw	
7	1	941907-8	x Spring washer	
8	1	955782-8	x Nut	
9	1	281334-3	x Protecting plug	
10	1	8360041-1	x El. cable	
11	1	943727-8	x Washer hose	
12	1	8360051-0	x Decal	
13	1	1219230-8	Ignition coil	Not included in the kit, but necessary for year models 1975 up to and incl 1978
14	1	1304149-6	Washer fluid container	} Necessary for cars with servo steering and/or parking heater 03-B. Not included in the kit.
15	1	1213943-2	Cover	
16	1	1255568-6	Filter	
17	1	1304205-6	Bracket	
18	1	1304204-9	Attachment strap	
-	1		x Exhaust control decal	
19	1	948702-6	x Strip clamp	



	CARBURETOR SOLEX 40 EIES	EXPORT	810701	
		FLAP 240	SECTION B	PAGE 1

Pos	Qty	Part No	Description	Specification
		552554-8	Carburetor Solex 40 EIES, complete	Designed for B20 engines. Earlier included in GT-kit 552550. For parts see 140, section B, pages 7-9.



	EXHAUST SYSTEM	EXPORT		810701
		FLAP 240	SECTION 8	PAGE 2

VOLVO RALLY EXHAUST KITS are designed to give the least possible loss of power.

With a VOLVO RALLY EXHAUST KIT the engine breathes better. These kits offer an increase in power of 5 to 9 hp DIN, depending on car model, and are designed for normal as well as competition driving.

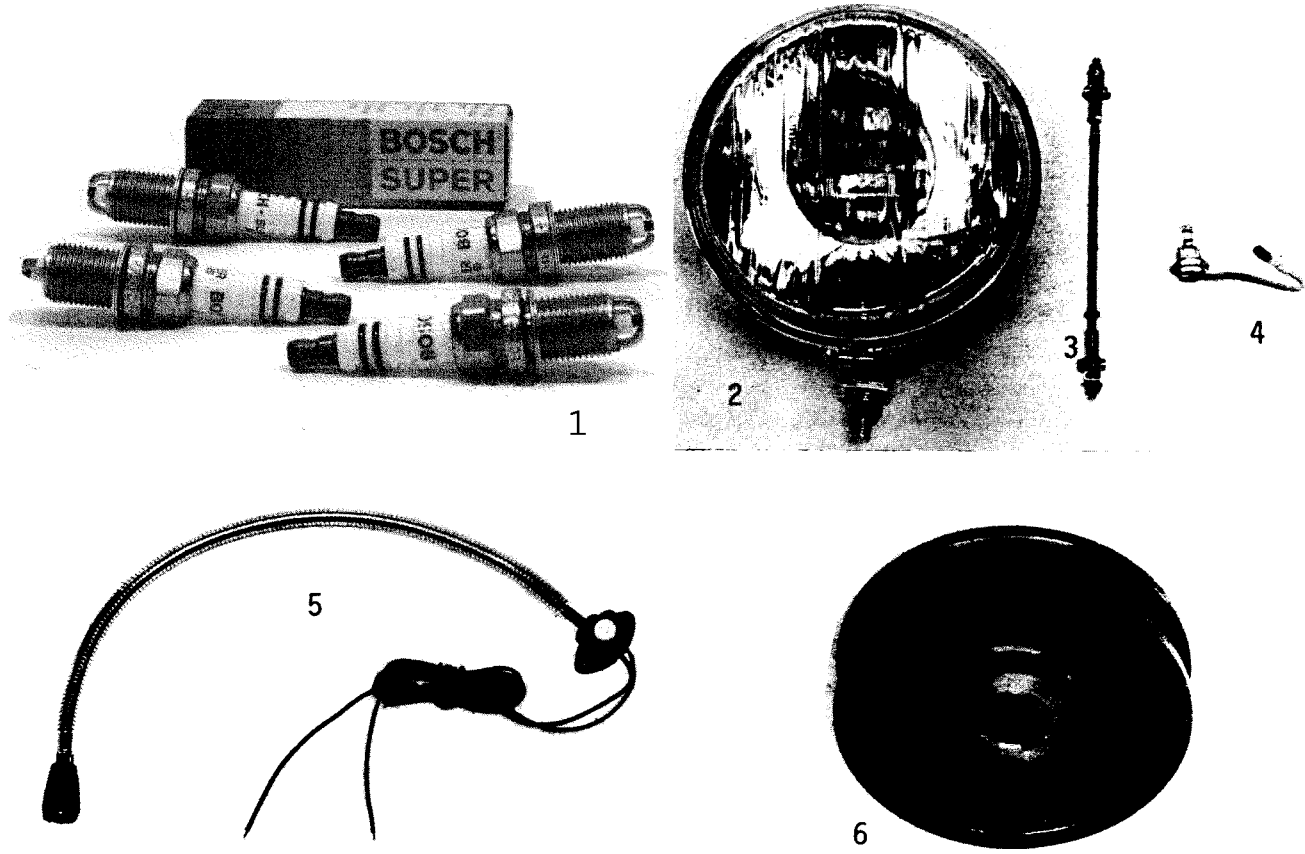
The VOLVO RALLY EXHAUST KITS are as easy to fit as production exhaust kits - mounting details are included.

Pos	Qty	Part No	Description	Specification
1	1	552295-8	Rally Exhaust System, compl for P240 DL and GL, model year 1975	Part no 552295-8 is replaced by 552296-6, 552297 is replaced by 552397, 552292 by 552312 and 552294 by 552394.
	1	552297-4	x Front pipe	
	1	552228-3	x Intermediary pipe	
	1	552282-6	x Silencer, front	
	1	552291-7	x	
	1	552292-5	x Silencer, rear	
	1	552393-1	x Exhaust pipe	
	1	552294-1	x Assembly kit	
1	1	552289-1	Rally Exhaust System, compl for P240 L, model year 1975	
	1	552287-5	x Front pipe	
	1	552288-3	x Intermediary pipe	
	1	552282-6	x Silencer, front	
	1	552291-7	x	
	1	552292-5	x Silencer, rear	
	1	552393-1	x Exhaust pipe	
	1	552294-1	x Assembly kit	
1	1	552296-2	Rally Exhaust System, compl for P240 DL and GL 1976 -	
	1	552397-4	x Front pipe	
	1	552288-3	x Intermediary pipe	
	1	552282-6	x Silencer, front	
	1	552291-7	x	
	1	552312-1	x Silencer, rear	
	1	552393-1	x Exhaust pipe	
	1	552394-9	x Assembly kit	



ELECTRICAL EQUIPMENT

EXPORT		810701
FLAP	SECTION	PAGE
240	C	1



Pos	Qty	Part No	Description	Specification
1	1	273536-3	Spark plug Bosch W225T1 (W5A)	For B20 GT-kit and tuned B20-engines up to about 130 hp DIN
2	1	552028-3	Spotlight without bulb, 180 mm diameter.	Recommended for Rally driving and for normal driving
3	1	552031-7	Stay for spotlight 552028	Necessary for Rally driving and recommended for normal driving to avoid shaking lights
4	1	552030-9	Bulb 100 W	
5	1	283651-8	Map reading lamp	Necessary for Rally driving and recommended also for the production car
6	1	552884-9	Belt pulley for alternator	Diameter 86 mm

EXPORT		810701	
FLAP	SECTION	PAGE	
240	C	2	




ELECTRONIC IGNITION SYSTEM



Electronic ignition system. Gives the following advantages:

- No wear (No breaker points)
- Setting remains unchanged
- Higher ignition voltage at all revs and increased starting properties.

Part No	Description	Specification
552737-9	Electronic ignition system	For all B21 A engines

	TRANSMISSION M40	EXPORT		810701
		FLAP	SECTION	PAGE
		240	D	1

Production gearboxes often have relatively long steps between the different speeds. This is not accepted in a tuned competition car since it frequently means that the engine does not work in the right RPM range.

For this reason the following parts which are needed to convert a non-needle M40 gearbox to a close-ratio gearbox M40 and to convert an M45 gearbox to a close-ratio gearbox are available.

Information about range of application and ratio for M40 is given in table A below, and for M45 on page 3.

Table A: Close-ratio M40 gearbox of needle-bearing type for B20 engines (2.0-2.2 litres)

TYPE	R A T I O				APPLICATION
	1st	2nd	3rd	4th	
M40	2.62:1	1.67:1	1.24:1	1:1	Rally, rallycross and track racing
M40 production gearbox	3.41:1	1.99:1	1.36:1	1:1	



GEARBOX PARTS M40

EXPORT		810701	
FLAP	SECTION	PAGE	
240	D	2	

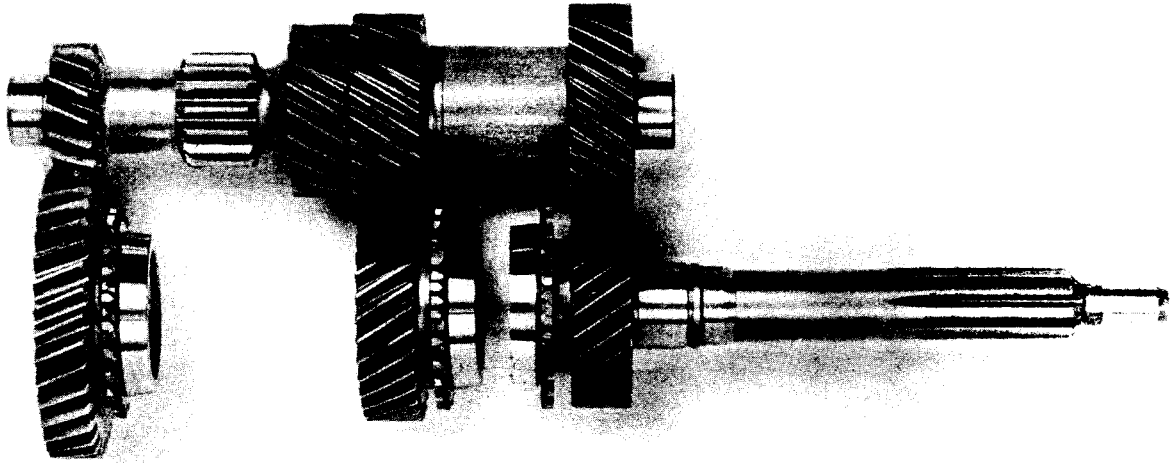


Table B: To convert a non-needle-bearing M40 gearbox to a needle-bearing type.

Qty	Part No	Description	Note
1	380217-0	1st speed gear	Production part
1	380218-8	2nd speed gear	Production part
2	181330-2	Needle bearing	Production part
1	181331-0	Needle bearing	Production part

Table C: To convert a needle-bearing type M40 gearbox to a close-ratio gearbox.

TYPE	GEAR CLUSTER	P A R T N O		INPUT SHAFT
		1st SPEED GEAR	3rd SPEED GEAR	
M40 year model 1975	380824-3	380217-0	380423-4	380382-2


	GEARBOX PARTS M45	EXPORT	810701	
		FLAP	SECTION	PAGE
		240	D	3

Table D: Ratios

TYPE	R A T I O			
	1st	2nd	3rd	4th
Close-ratio M45	2.50:1	1.63:1	1.27:1	1.0:1
M45 Production gearbox	3.71-4.03:1	2.16:1	1.37:1	1.0:1

Table E: To convert a production M45 gearbox to a close-ratio gearbox.

TYPE	P A R T N O				
	INPUT SHAFT	1st SPEED GEAR	3rd SPEED GEAR	COUNTER SHAFT	RETAINING RING
M45 models 1976-1981 *)	1232709-4	1232710-2	1232714-4	1232345-7	951671-7
	Kit no 552396-4				

\*) NOTE! For year models 1975-1978 also synchronizing cones and connection sleeves are to be replaced by a later execution.

For 1979 and later models production input shaft is provided with another type of splines, whereas input shaft no 1232709-4 has the earlier execution. This means that the clutch disc must be replaced.





FINAL GEARS

EXPORT

810701

FLAP

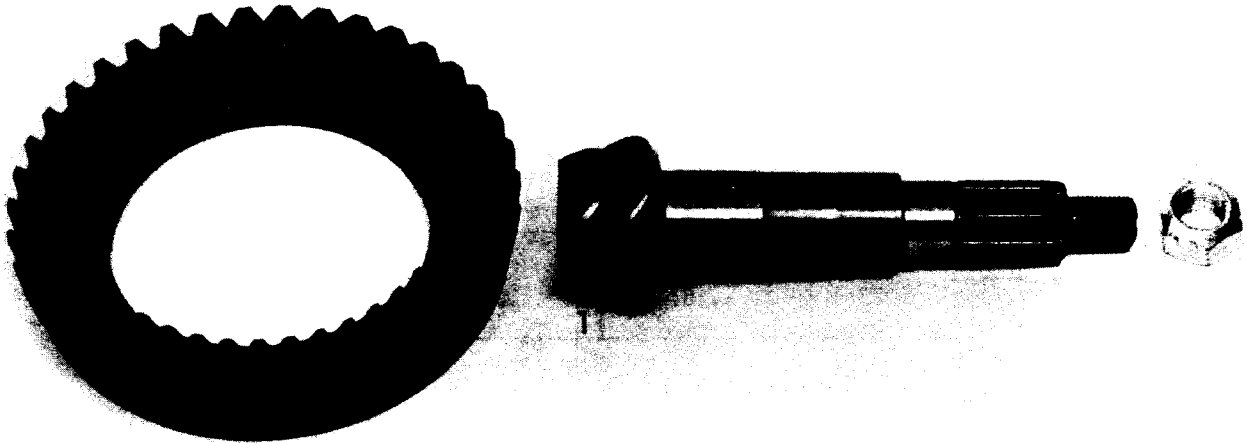
SECTION

PAGE

240

D

4



Rear axle ratios

To get the maximum power delivered at the wheel and thereby the best possible acceleration, the production rear axle ratio must be numerically raised in relation to the production ratio. This also means, however, that the top speed of the car is reduced at a given maximum motor speed, which has to be taken into consideration. Our general recommendation is:

Rally: Either final gear 5.38:1 or 4.88:1 for standard class, As a rule 5.38:1 is the most suitable,

Rallycross: 5.38:1 or 4.88:1 depending mainly on the engine displacement and the wheel dimension. A 2 litres engine and 15" tyres require 5.38:1. With a 2.4 litres engine with 13" or 15" tyres the best ratio is 4.88:1.

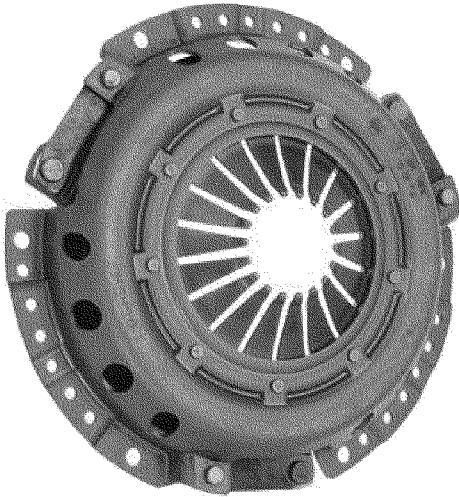
Track Racing: Since the character of the tracks varies more than in Rally and Rallycross, the top speed on the straights will decide. Normally 4.88:1 and 4.56:1 are the most suitable.

Pos	Qty	Part No	Description	Specification
	1	552144-8	Final gear 5.38:1, M30	21.8 km/h at 1.000 RPM. Application: Rally and Rallycross
1	1	525880-1	Final gear 4.88:1, M30	24.0 km/h at 1.000 RPM. Application: Very fast Rallies and Track racing
	1	380789-8	Gear, large, for output shaft	Reduction gear to give correct speedometer indication with rear axle ratio 4.88:1. Suits close-ratio gearbox M40.
	1	380305-3	Gear, small (plastic)	

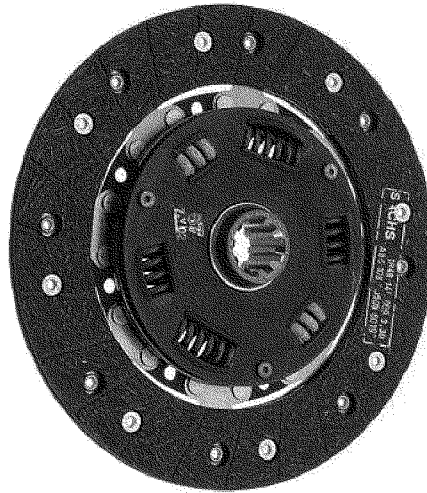


CLUTCH B20

EXPORT		810701	
FLAP	SECTION	PAGE	
240	D	5	



1



2



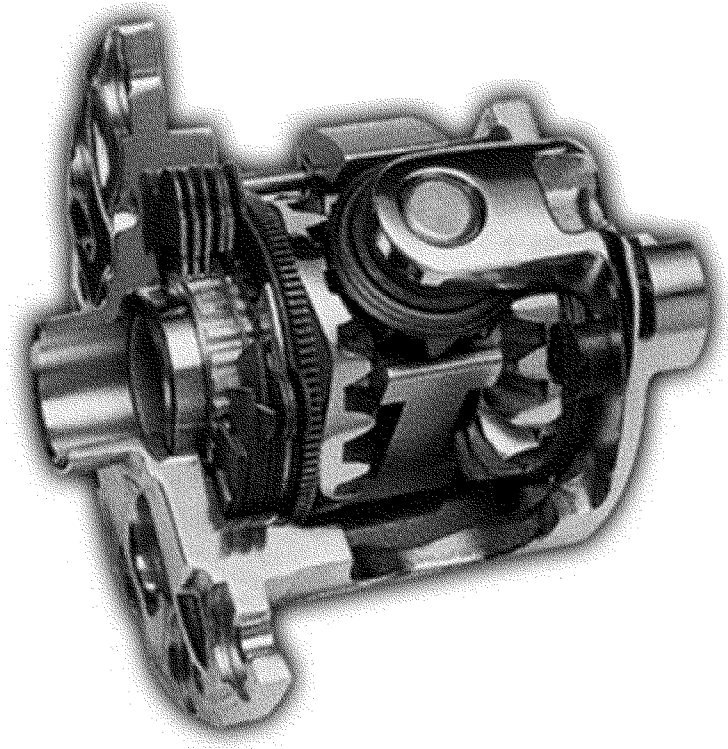
3

Pos	Qty	Part no	Description	Specification
<u>Clutch</u>				
	1	418930-4	Clutch "Laplander"	Clamping force 4660-5400 N (475-550 kp). Disc part no 418871. Withdrawal bearing part no 380569. Application: Where production clutch is insufficient, e.g. Rally or Standard class, or if car is heavily loaded or with towing.
1	1	552145-5	Clutch "RAC"	Clamping force 7100-7750 N (725-790 kp). Disc part no 552146. Withdrawal bearing part no 672122. Application: "Special II-III"-engines. Specially suitable for Rally, Rally-cross and Drag-racing. Up to a torque of 255 Nm (26 kpm). Plate for withdrawal bearing is dis-mounted.
<u>Discs</u>				
	1	418871-0	Disc	To be used with clutch 418930. Suitable up to and inclusive of model year 1978.
2	1	552146-3	Disc	To be used with clutch 552145. Suitable up to and inclusive of model year 1978.
<u>Withdrawal bearings</u>				
3	1	380569-4	Withdrawal bearing	To be used with clutch 418930.
		672122-9	Withdrawal bearing	To be used with clutch 552145.



LIMITED SLIP DIFFERENTIAL

EXPORT		810701	
FLAP	SECTION	PAGE	
240	D	6	




1

By installing a limited slip differential you increase the power transferred to the wheel with the highest friction, and thereby the acceleration, in a situation where the two driving wheels have different friction. Consequently in all competition driving - where the rules permit - a limited slip differential should be used.

Presently it is homologated for the following models: 242 L B20; 242 DL B21; 244 GL. See homologation papers for each model.

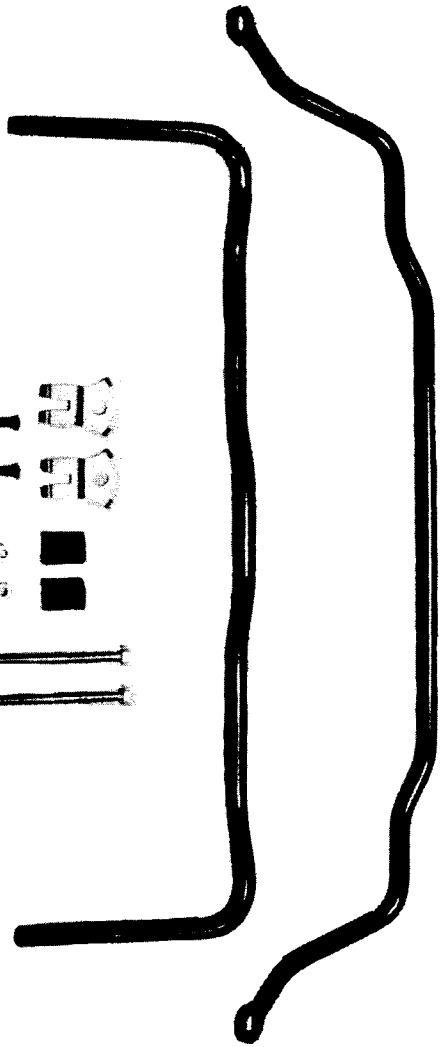
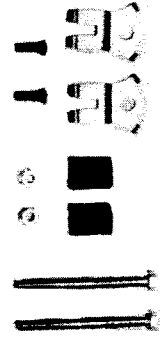
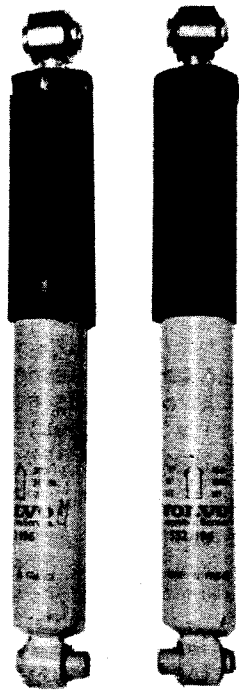
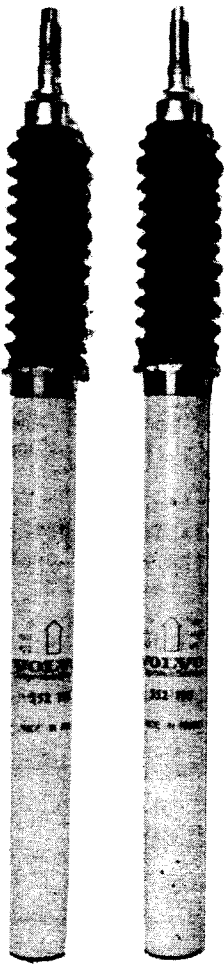
Pos	Qty	Part No	Description	Specification
1	1	384727-4	Limited slip differential M30	

		EXPORT		810701
		FLAP	SECTION	PAGE
SUSPENSION		240	E	1

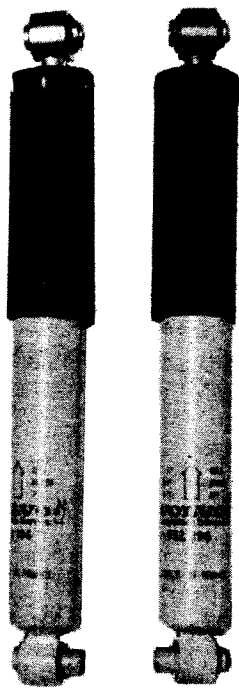
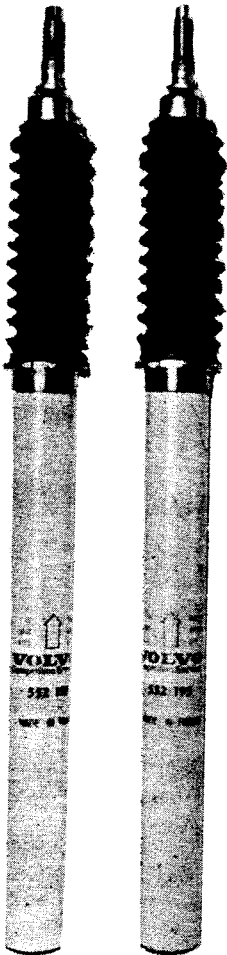
In a production car the suspension is a compromise between several demands where the driver's and the passengers' comfort has a high priority. As our roads get more even and straight, and the customer's preference for a soft and silent ride increases, the need to modify the car for competition driving increases. Comfort has to be sacrificed for demands such as optimum road holding ability.

The shock absorber setting will have to be drastically changed - the relatively soft production shock absorbers are replaced by gas-pressure shock absorbers that keep the wheels on the road, no matter how bumpy it is, without fading. Much harder springs also have to be used.

Between these two categories - the competition driver and the non-competition driver - there is a group of drivers who do not want to enter competitions but still want a car that can take tougher driving than the production car. As you will see, suspension parts are available for both the competition driver and the demanding non-competition driver.



1



2



SUSPENSION

EXPORT		810701	
FLAP	SECTION	PAGE	
240	E	2	

Pos	Qty	Part No	Description	Specification
1	1	552095-2	Road Holding Kit	Designed for driving when an increased stability is required.
2	1	552093-7	x Shock absorber kit	Gas pressure shock absorbers designed for normal driving. Somewhat harder setting than production shock absorbers.
	2	552195-0	xx Shock absorber, front	
	2	552196-8	xx Shock absorber, rear	
	1	552096-0	x Stabilizer kit	Designed for normal driving and Rally driving. Offers a much increased stability.
	1	552097-8	xx Stabilizer, front	Diameter 21 mm
	1	552098-6	xx Stabilizer, rear	Diameter 25 mm
	2	955356-1	xx Bolt	For 245 only
	2	1221956-4	xx Bracket	
	2	947292-9	xx Screw	
	2	945409-1	xx Nut	
	2	1228841-1	xx Rubber bushing for 552097	
	2	1206273-3	xx Bolt	
2	1	552094-5	Shock absorber kit	Like 552093 but with harder setting. For Rally.
	2	552197-6	x Shock absorber, front	
	2	552198-4	x Shock absorber, rear	
	2	552538-1	Rally spring, front	
	2	552539-9	Rally spring, rear	



MISCELLANEOUS EQUIPMENT

EXPORT

810701

FLAP  
240

SECTION  
G

PAGE  
1



Pos	Qty	Part No	Description	Specification
	1	552168-7	Front spoiler	Improves the car's stability and reduces fuel consumption. Suitable also for 140 and 164 1974- .